



Apartment

**FLAT 97, MORTISE
HOUSE 21 CHAILEY
PLACE, HAYES,
LONDON,
MIDDLESEX, UB3 3FL**

Per Month

£2,300 Per

FEATURES



TUCKERMAN
ESTATE AGENTS
PROPERTY PROFESSIONALS

2 Bedroom Apartment located in London

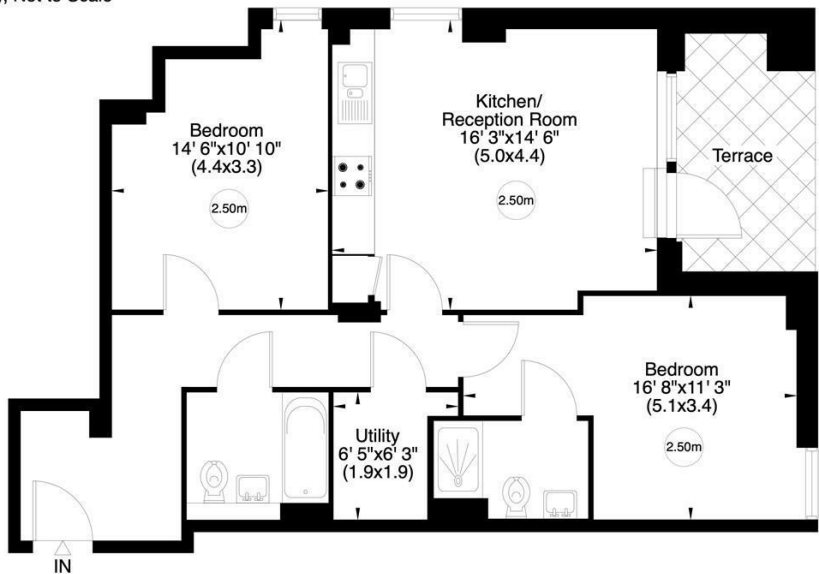
A smart new build two bedroom apartment with private balcony and parking space.

Call us on
020 7222 5510
info@tuckermanresidential.co.uk
www.tuckermanresidential.co.uk

Council Tax Band
C

Mortise House, Chailey Place, UB3

Gross internal area (approx.)
72 Sq m (774 Sq ft)
For identification only, Not to Scale



Sixth Floor

www.virtualtours.london
Not to scale, for guidance only and must not be relied upon as a statement of fact. All measurements and areas are approximate only (and have been prepared in accordance with the current edition of the RICS Code of Measuring Practice).

Energy Efficiency Rating		
	Current	Potential
Very energy efficient - lower running costs		
(92 plus) A		
(81-91) B	84	84
(69-80) C		
(55-68) D		
(39-54) E		
(21-38) F		
(1-20) G		
Not energy efficient - higher running costs		
England & Wales		EU Directive 2002/91/EC

Agents Note: Whilst every care has been taken to prepare these particulars, they are for guidance purposes only. All measurements are approximate and are for general guidance purposes only and whilst every care has been taken to ensure their accuracy, they should not be relied upon and potential buyers are advised to recheck the measurements.